



## Northwick Terrace | London | NW8

Asking price £600,000 | Leasehold



**ADN**  
RESIDENTIAL

A modern one-bedroom apartment ideally situated just 0.4 miles from Warwick Avenue Underground Station and 0.6 miles from Maida Vale Underground Station (Bakerloo Line). This well-presented property benefits from lift access and a private balcony.

The apartment features a bright reception room, separate kitchen, guest W/C, double bedroom with built-in storage and en-suite bathroom. Further benefits include wooden floors throughout and double-glazed windows.

Tenure: Leasehold - 113 Years Remaining  
Service Charge: £3,890.69  
Ground Rent: Peppercorn

- One Bedroom
- Reception Room
- Separate Kitchen
- Guest W/C
- En Suite Bathroom
- Balcony
- Lift

Council Tax Band: E  
EPC: C

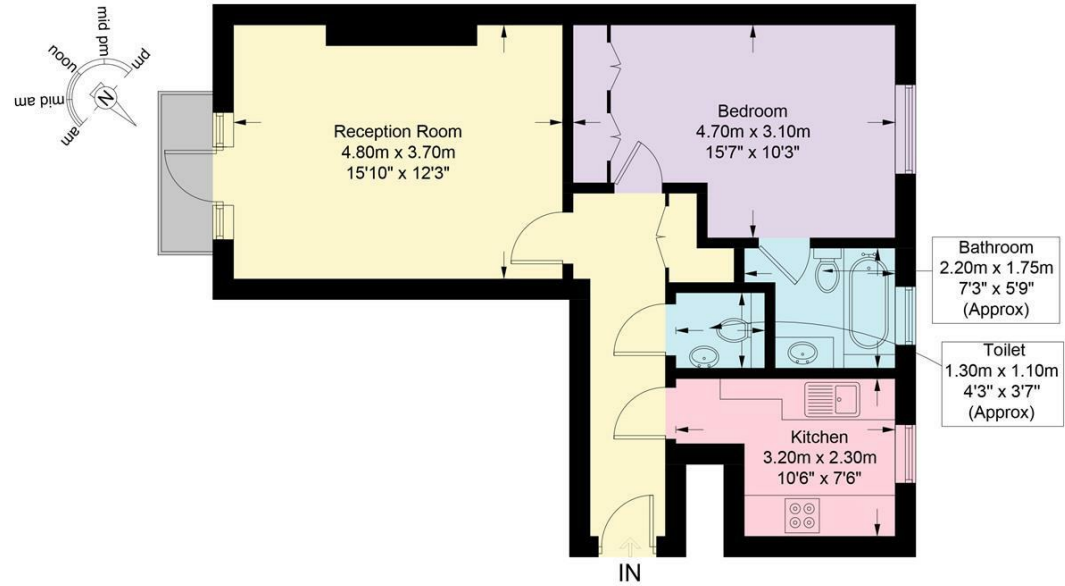






**Northwick Terrace, NW8**

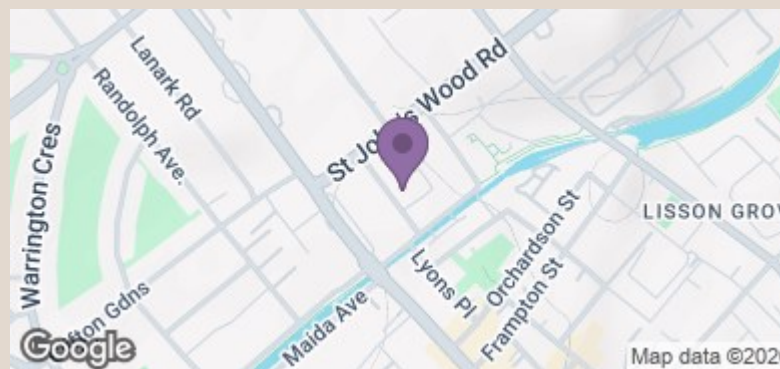
**Approximate Gross Internal Area = 554 sq ft / 52.0 sq m**



**Third Floor**



This plan is for layout guidance only and is not drawn to scale unless stated. All dimensions, including windows, doors, and the Total Gross Internal Area (GIA), are approximate. For precise measurements, please consult a qualified architect or surveyor before making any decisions based on this plan.



| Energy Efficiency Rating                    |   | Current | Potential |
|---|---|---------|-----------|
| Very energy efficient - lower running costs |   |         |           |
| (92 plus)                                   | A |         |           |
| (81-91)                                     | B |         |           |
| (69-80)                                     | C |         |           |
| (55-68)                                     | D |         |           |
| (39-54)                                     | E |         |           |
| (21-38)                                     | F |         |           |
| (1-20)                                      | G |         |           |
| Not energy efficient - higher running costs |   |         |           |
| England & Wales                             |   | 77      | 81        |
| EU Directive 2002/91/EC                     |   |         |           |